



100% 100% 100%



Electric screw drive

Independent electric screw drive brings you both plasticization and energy efficiency.

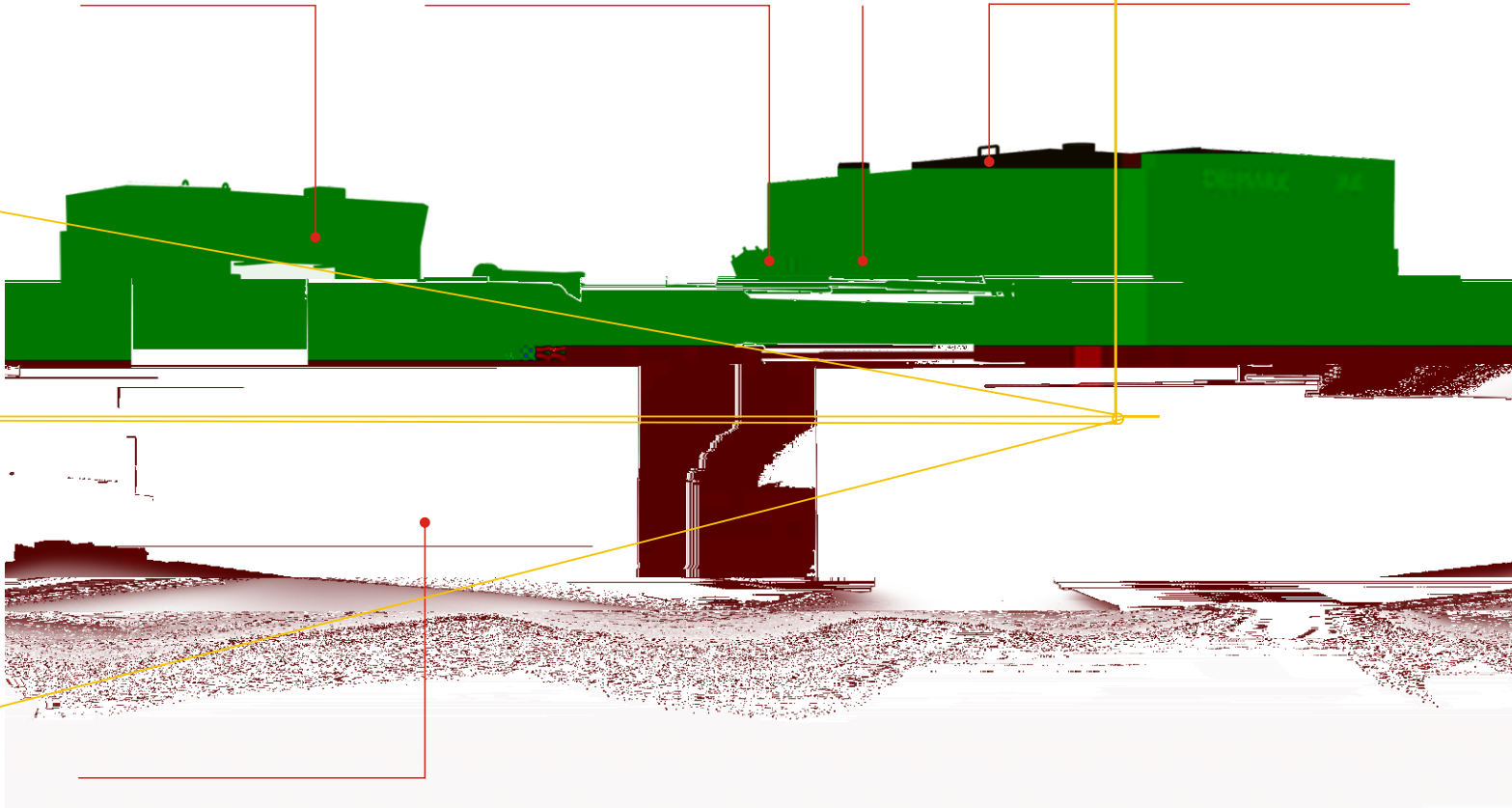
Pressure hold valve

With the advanced pressure hold technology, the system makes the plasticization and pressure hold at the same time therefore has a better cycle time for production.

Reliable clamping

Special design for PET preform mold, which ensure the fast clamping movement and uniformly forced of the mold.

Proportional valve control



Servo motor drive hydraulic system

The hydraulic system was driven by a servo motor which ensure the lower energy consumption and sufficient hydraulic power supply.





